

- 1. INSTRUCTIONS FOR SAFETY AND USE _____ 11
- 2. INSTRUCTIONS FOR DISPOSAL _____ 13
- 3. INSTALLING THE DISPLAY UNIT _____ 14
- 4. DESCRIPTION OF THE CONTROLS _____ 15
- 5. CLEANING _____ 16



*INSTRUCTIONS FOR THE INSTALLER: these are intended for the **qualified technician** who must install the appliance, set it functioning and carry out an inspection test.*



INSTRUCTIONS FOR THE USER: these contain user advice, a description of the commands and the correct procedures for cleaning and maintenance of the appliance.

1. INSTRUCTIONS FOR SAFETY AND USE



THIS MANUAL IS AN INTEGRAL PART OF THE APPLIANCE. IT MUST BE KEPT IN ITS ENTIRETY AND IN AN ACCESSIBLE PLACE FOR THE WHOLE WORKING LIFE OF THE APPLIANCE.

WE ADVISE YOU TO CAREFULLY READ THIS MANUAL AND ALL THE INSTRUCTIONS THEREIN BEFORE USING IT. INSTALLATION MUST BE CARRIED OUT BY QUALIFIED PERSONNEL IN ACCORDANCE WITH THE REGULATIONS IN FORCE. THIS APPLIANCE IS INTENDED FOR PROFESSIONAL USE AND CONFORMS TO THE **EC DIRECTIVES** CURRENTLY IN FORCE. THE APPLIANCE HAS BEEN BUILT TO CARRY OUT THE FOLLOWING FUNCTIONS: **HEATING FOOD**; ALL OTHER USES ARE CONSIDERED UNSUITABLE.

THE MANUFACTURER CANNOT BE HELD LIABLE FOR USE OTHER THAN AS INDICATED.



DO NOT DISCARD PACKING IN THE HOME ENVIRONMENT. SEPARATE THE VARIOUS WASTE MATERIALS AND TAKE THEM TO THE NEAREST SELECTIVE WASTE COLLECTION CENTRE.



THE APPLIANCE MUST BE EARTHED IN COMPLIANCE WITH ELECTRICAL SYSTEM SAFETY REGULATIONS.



WHEN CONNECTING TO THE ELECTRICITY SUPPLY USING PLUG AND SOCKET, MAKE SURE THAT BOTH ARE COMPATIBLE AND CONNECT THEM TO THE POWER SUPPLY CABLE IN ACCORDANCE WITH THE REGULATIONS IN FORCE.

NEVER UNPLUG BY PULLING ON THE CABLE.



DO NOT OBSTRUCT VENTILATION OR HEAT DISPERSAL OPENINGS.



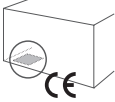
IMMEDIATELY AFTER INSTALLATION CARRY OUT A BRIEF INSPECTION TEST OF THE APPLIANCE, FOLLOWING THE INSTRUCTIONS PROVIDED FURTHER ON. SHOULD THE APPLIANCE NOT WORK, DISCONNECT IT FROM THE SUPPLY AND CALL THE NEAREST TECHNICAL ASSISTANCE CENTRE. **NEVER ATTEMPT TO REPAIR THE APPLIANCE.**



WHENEVER YOU FINISH USING IT, ALWAYS MAKE SURE THAT THE SWITCH IS IN THE **O** (OFF) POSITION.



NEVER INSERT INFLAMMABLE OBJECTS: THEY COULD BE ACCIDENTALLY IGNITED AND CAUSE FIRES.



THE IDENTIFICATION PLATE BEARING THE TECHNICAL DATA, SERIAL NUMBER AND BRAND NAME IS POSITIONED UNDER THE APPLIANCE.

DO NOT REMOVE THIS PLATE FOR ANY REASON.



THE APPLIANCE IS DESIGNED FOR PROFESSIONAL USE BY TRAINED PERSONS. KEEP CHILDREN AT A SAFE DISTANCE AND NEVER ALLOW THEM TO PLAY WITH IT.



THE USE OF THIS APPLIANCE IS NOT PERMITTED TO PEOPLE (INCLUDING CHILDREN) OF REDUCED PHYSICAL AND MENTAL ABILITY, OR LACKING IN EXPERIENCE IN THE USE OF ELECTRICAL APPLIANCES, UNLESS THEY ARE SUPERVISED OR INSTRUCTED BY ADULTS OR PEOPLE RESPONSIBLE FOR THEIR SAFETY.



THE APPLIANCE IS DESIGNED FOR A MAXIMUM LOAD OF 2 KG.



THIS APPLIANCE IS MARKED ACCORDING TO EUROPEAN DIRECTIVE 2002/96/EC ON WASTE ELECTRICAL AND ELECTRONIC EQUIPMENT (WEEE).

THIS DIRECTIVE DEFINES THE STANDARDS FOR THE COLLECTION AND RECYCLING OF WASTE ELECTRICAL AND ELECTRONIC EQUIPMENT APPLICABLE THROUGHOUT THE EUROPEAN UNION.



BEFORE THE APPLIANCE IS PUT INTO OPERATION, ALL LABELS AND PROTECTIVE FILMS APPLIED INSIDE OR OUTSIDE MUST BE REMOVED.



The manufacturer declines all responsibility for damage to persons or things caused by the non-observance of the above prescriptions or deriving from tampering with any part of the appliance or by the use of non-original spares.

2. INSTRUCTIONS FOR DISPOSAL OUR ENVIRONMENTAL CARE



Our product's packing is made of non-polluting materials, therefore compatible with the environment and recyclable. Please help by disposing of the packing correctly. Find the addresses of collection, recycling and disposal centres from your retailer or from the competent local organisations.

Do not throw the packing or any part of it away. They can constitute a suffocation hazard for children, especially the plastic bags.

Your old appliance also needs to be disposed of correctly.

Important: hand over your appliance to the local agency authorised for the collection of electrical appliances no longer in use. Correct disposal means intelligent recycling of valuable materials.

Before disposing of your old appliance remove the door and leave the racks in their normal working positions so that children cannot get stuck in the compartment whilst playing.

It is also necessary to cut the interconnecting cable to the power supply network, removing it along with the plug.

INFORMATION FOR USERS

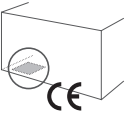
Pursuant to Directives 2002/95/EC, 2002/96/EC and 2003/108/EC relating to the reduction of the use of hazardous substances in electrical and electronic appliances, as well as to the disposal of refuse, the crossed-out bin symbol on the appliance indicates that the product, at the end of its useful life, must be collected separately from other refuse. Therefore, the user must consign the product that has reached the end of its working life to the appropriate differentiated collection centres for electrical and electronic refuse, or deliver it back to the retailer when purchasing an equivalent product, on a one for one basis. Adequate selective collection for the subsequent forwarding of the decommissioned product to recycling, treatment and ecologically compatible disposal contributes to avoiding possible negative effects on the environment and on health and promotes the recycling of the materials of which the appliance consists. Illicit disposal of the product by the user will result in the application of administrative sanctions.



3. INSTALLING THE DISPLAY UNIT



The appliance must be installed on a free-standing horizontal work top. The distance from the rear wall must allow easy access to the terminal board for connection of the power supply cable. Installation must be carried out by a **qualified technician** and in compliance with EC DIRECTIVES currently in force.



3.1 Electrical connection

Make sure the voltage and the cross-section of the power supply line match the specifications indicated on the identification plate positioned underneath. **Do not remove this plate for any reason.** The appliance is fitted with a H05RN-F three-core cable for operation at 230V~ and a power supply plug.



The supplied cable is a H5RN-F 3 x 0.75 mm² three-core cable. The power supply cable must be replaced by the manufacturer or by an authorised service centre to prevent any risks.



The terminal indicated by this symbol links up parts that are normally earthed. Connect the appliances appropriately using this terminal in order to make sure that they are equipotential.



The plug and wall-mounted socket must be of the same type (in accordance with current regulations). Make sure that the supply line is suitably earthed. Avoid use of adapters and shunts.



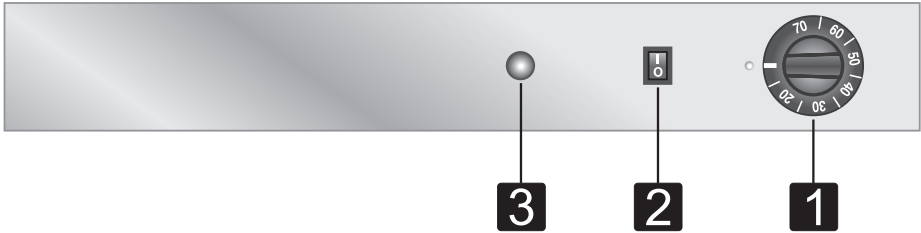
The manufacturer cannot be held liable for damage to persons or things caused by failure to observe the above instructions or deriving from tampering with any part of the appliance.



Instructions for the user

GB-IE

4. DESCRIPTION OF THE CONTROLS

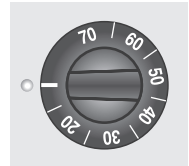


1

THERMOSTAT KNOB

Allows you to select the most suitable heating temperature.

The desired temperature is selected by turning the knob clockwise. Adjustment is progressive so that the oven also operates at any intermediate value.



2

ON / OFF BUTTON

Allows you to switch on the heating element inside the display unit.



3

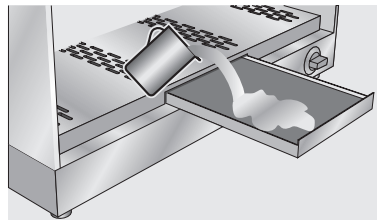
GREEN INDICATOR LIGHT

When on, it indicates that the appliance is heating up. When the temperature set using the thermostat knob is reached, the light goes off. During heating, the light comes on and goes off various times signalling that the temperature is being kept constant as per the set value.



IMPORTANT

When using the exhibitor for heating, make sure that the sponge inside the central tray is immersed in the water in order to humidify the inside.





5. CLEANING



Important:

do not aim jets of water directly against the appliance; avoid the use of pressure jets.



Before performing any operations, switch off the power supply.

5.1 Cleaning the Plexiglas parts

Use specific products for cleaning. It is not recommended to use alcohol.

5.2 Cleaning the stainless steel parts

To clean and preserve the stainless steel surfaces, always use **only** specific products that do not contain abrasives or chlorine-based acids.

How to use: pour the product onto a damp cloth and wipe the surface, rinse thoroughly and dry with a soft cloth or chamois leather.

Do not use metallic sponges or sharp scrapers: they will damage the surface.

Use ordinary non-abrasive products for steel, with the aid of wooden or plastic utensils if necessary.

Rinse thoroughly and dry with a soft cloth or chamois leather.

